

What's On 2011

Dorman Museum

Captain Cook Birthplace Museum

Middlesbrough Museums

ADMISSION FREE



A FREE and FUN day out!



Middlesbrough Museums

Middlesbrough Museums offer a fantastic insight into the region's history, its people and its connections with cultures from all over the world.

The history of the region's geological, social and industrial heritage can be seen at the **Dorman Museum**. The museum opened to the public in 1904 and has on display the largest publicly-owned collection of Linthorpe Pottery and an amazing ornithological collection, preserved in its original Edwardian setting.

Did you know that the famous Captain James Cook was born in Marton, Middlesbrough? The history of his life and achievements are represented at the **Captain Cook Birthplace Museum** in Stewart Park. Totem pole carving, Maori tattoos and the traditional art and crafts of many Pacific peoples encountered by Cook are also displayed.

Both museums have a variety of permanent and temporary exhibitions with fun activities and events for all the family. Whatever your age, Middlesbrough's Museums are well worth a visit!

Learning, Fun and Activities

Middlesbrough Museums offer a range of FREE fun packed family activities. Why not take part? With opportunities to learn and have fun whatever the age, everyone can join in! Check out the websites for more details:

www.dormanmuseum.co.uk & www.captcook-ne.co.uk

FREE Family Drop in Sessions

Both the Dorman and Cook offer family based activities available during gallery opening hours. The Dorman Museum has The Art Cart, a great FREE resource containing everything you need to make wonderful creations to take home. The Captain Cook Birthplace Museum offers FREE family backpacks, which contain interactive crafts and games for the whole family.



Other family activities and events are programmed during school holidays at both venues, from Easter egg painting, hat & puppet making, Christmas activities and much more.

Lectures and Adult Workshops

Lectures accompany many temporary exhibitions and the annual Elgee Memorial Lecture with guest speaker takes place in December at The Dorman Museum.

Guided Tours

Weekday guided tours can be arranged in advance of a group visit. Contact reception at either venue for further details.

Dorman Museum

The Dorman Museum houses 8 permanent displays including the vast collection of Linthorpe Pottery and ornithological objects.



Earth in Space

SEE a full size dinosaur model, human skulls and a mineral mine under a dark starry sky.

20th Century Woman

EXPERIENCE the lives of women during the last century.

H2O Gallery

EXCITING new resources have been developed as part of H2O. Take a dip in our virtual fish pond and create bubbles with our fantastic machine.

The Nelson Room

SEE over 100 mounted bird specimens on display in the Dorman's original Edwardian setting, a reminder of what the museum was like soon after it opened in 1904.

Lordship of Acklam Plan

MARVEL at the Lordship of Acklam Plan, a remarkable and unique historic plan. It details much of the area now occupied by the town of Middlesbrough.

Four Corners

LOOK at the origins of the museum's collections and how a very diverse group of objects from the four corners of the world ended up in Middlesbrough.

Linthorpe Art Pottery Gallery

FIND out about Middlesbrough's most innovative and interesting potteries of the Victorian era. This has over 700 examples of Linthorpe Art Pottery on display.

Town in Time

VISIT a Town in Time. These two exhibition spaces detail the vast collection of objects depicting the town's history and people, collected by the Dorman Museum.



Temporary Exhibitions

A programme of temporary exhibitions compliments the museum's permanent displays.

Transporter Bridge Centenary Programme (1911-2011)

Steel Life

(with ArtsBank, Saltburn)
19 April – 17 July

Images of Teesside's industrial past, present and future by leading artists, photographers and sculptors.

Inspiring Bridges

15 April – 23 December

Students from Oakfield Community College rise to the challenge to design a footbridge to accompany the Transporter.

Tees Transported

10 May – 3 July

Local landscape photographer Ged Hickey's stunning new images celebrating the centenary.

Crossing Point

5 July – 2 October

Cleveland Arts Society members respond to the theme of Crossing Point in celebration of the Transporter Bridge.

Forceworks

26 July – 28 August

Fun science interactives explaining many of the forces used in the operation of the Transporter Bridge.



The Transporter Bridge Exhibition

(with ArtsBank, Saltburn)
27 September –
23 December

The story of the town's iconic landmark, exploring its history, peoples' reactions to it and the sense of place that it generates.

Marton Grove 1928-2011

11 October – 23 December

Community exhibition sharing memories of Marton Grove School.

Captain Cook Birthplace Museum

The Captain Cook Birthplace Museum houses 6 permanent displays charting the life of Captain James Cook.



Cook's Early Years

VISIT the Cook family and the Birthplace Cottage.

Cook's Early Career

WATCH a film about Cook's life in Great Ayton, Staithes and Whitby, including his training as a seaman.

Cook's Early Career in the Royal Navy

FIND out about Cook's life as an able seaman and his introduction to surveying and chart making in Canada.

Life Aboard Ship

GO below deck and experience the feeling below on Cook's ship.

The Science of the Voyages

DISCOVER the Science of the Voyages and the botanical recording of Joseph Banks; the plants and animals discovered, collected and illustrated by the artists on the voyages.

The Ethnography of the Voyages

MEET the diverse people and their cultures discovered by Cook in the Pacific.

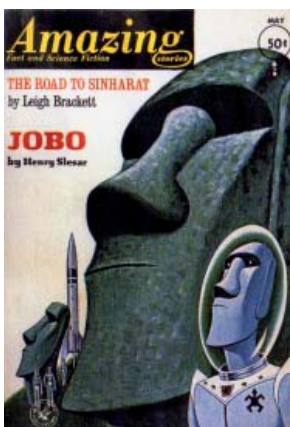
Look out for

The Captain Cook Birthplace Museum offers a range of temporary exhibitions with lots of fun activities. This season is no exception!

Easter Island, Myths, & Popular Culture 5 March - 4 September 2011

The Easter Island stone statues (called moai) have long held a popular appeal that has extended far into the culture of foreign countries. Murder mysteries, alien visitors, time travel, and hidden treasure have been a part of the island through a wide range of western myths, fantasies, and popular fictions.

This exhibition aims, for the first time, to bring together the fascinating diversity of cultural artefacts that have depicted Easter Island and, in particular, to define the popular appeal of the moai. Fiction films, adverts, cartoons, album covers, toys and board games, computer games, novels and comic books are a central part of this exhibition. As well as objects of material culture, which position miniature replicas of the moai as glowing lamps, cushions, and slot machine symbols. Curated by Dr Ian Conrich, and co-curated by Dr Roy Smith, and Martyn Harris.



SEASONAL OPENING FROM 2011

We shall still be welcoming our visitors as normal until the end of October but please note that the Museum will close for the winter starting 1 November and re-open in the Spring 2012.

BECOME A VOLUNTEER IN 2012

We shall be offering the opportunity to support the opening of the Museum in 2012 by recruiting to a team of volunteers. Look out for the campaign starting this autumn 2011 or register your interest by contacting: 01642 311211 or captcookmuseum@middlesbrough.gov.uk.

Events and Exhibitions Calendar 2011

Date From/To	Title	Venue
Until 4 Sept	■ Easter Island: Myths and Popular Culture	COOK
19 April 17 July	■ Steel Life (with ArtsBank, Saltburn)	DORMAN
Until 23 Dec	■ Inspiring Bridges until 23 December	DORMAN
10 May to 3 July	■ Tees Transported	DORMAN
31 May & 2 June	■ School Holiday Activities Visit www.dormanmuseum.co.uk & www.captcook-ne.co.uk for more details	DORMAN & COOK
Fri 10 June	■ Easter Island & the Mystery of Rongorongo / 3-4pm	COOK
1 & 3 June	■ School Holiday Activities Visit www.dormanmuseum.co.uk & www.captcook-ne.co.uk for more details	DORMAN & COOK
5 July to 2 Oct	■ Crossing Point	DORMAN
25 July to 2 Sept	■ School Holiday Activities Visit www.dormanmuseum.co.uk & www.captcook-ne.co.uk for more details	DORMAN & COOK
26 July to 28 Aug	■ Forceworks	DORMAN
Sept	■ 9/11 Anniversary Memorial Exhibition	DORMAN
27 Sept to 23 Dec	■ The Transporter Bridge Exhibition (with ArtsBank, Saltburn)	DORMAN
11 Oct to Dec	■ Marton Grove	DORMAN
22 Oct	■ International Captain Cook Society Meeting, new members welcome	COOK
Oct Half Term	■ School Holiday Activities & Captain Cook Celebration Week Visit www.dormanmuseum.co.uk & www.captcook-ne.co.uk for more details	DORMAN & COOK

■ EXHIBITION

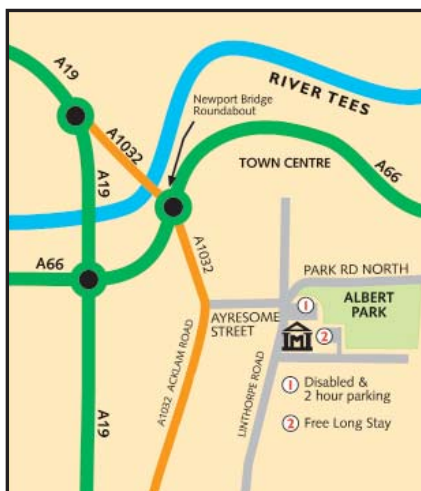
■ FAMILY

■ TALK

■ EVENT & ACTIVITY

Find Us

Dorman Museum



The museum is located next to Albert Park and the Cenotaph just off Linthorpe Road. Middlesbrough railway and bus stations are a 20 minute walk away on a mostly level route. There are frequent buses 11, 12, 27 & 63 that travel along Linthorpe Road.

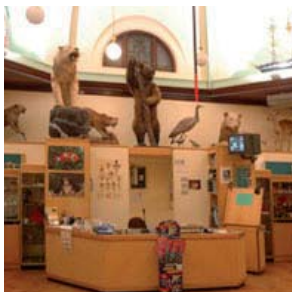
Captain Cook Birthplace Museum



The museum is located in Stewart Park off Ladgate Lane. Marton train station is a 10 minute walk away, and buses 63, 28, 27a and 29 regularly pass by the park. Disabled access to the park is along The Grove which is off the a172 Stokesley Road.

Facilities

Both museums offer facilities to make the most of your visit including parking, Nana Toms cafe, shop and toilets. Both also offer disabled parking, full disabled access throughout, and disabled toilets. If you need further information or require any assistance please contact the venue directly.



Dorman Museum



Captain Cook Birthplace Museum

Have you been to mima?

If you've enjoyed your visit to Middlesbrough's Museums then you might like to try visiting mima, Middlesbrough Institute of Modern Art.

Take a look at

www.visitmima.com



Opening Times

For opening times please see the museum websites for up to date information or contact the venues directly.

Dorman Museum

Linthorpe Road, Middlesbrough
TS5 6LA

Tel: 01642 813781

Fax: 01642 358100

e-mail: dormanmuseum@
middlesbrough.gov.uk

www.dormanmuseum.co.uk

Captain Cook Birthplace Museum

Stewart Park, Marton
Middlesbrough, TS7 8AT

Tel: 01642 311211

Fax: 01642 515659

e-mail: captcookmuseum@
middlesbrough.gov.uk

www.captcook-ne.co.uk



Dorman
Museum



Be the first to know What's On

Be the first to find out about new exhibitions, activities and events by signing up for the Middlesbrough Museum e-mailer. Log on to www.dormanmuseums.co.uk to sign up electronically or complete the form below and hand in at reception.

Name:

Postcode:

E-mail:

Particular Interest: -

- Exhibitions
- Public Events
- Kids & Families
- School & Formal Learning

Middlesbrough Museums will not share your details with anyone and you can amend personal information or unsubscribe at any time.

